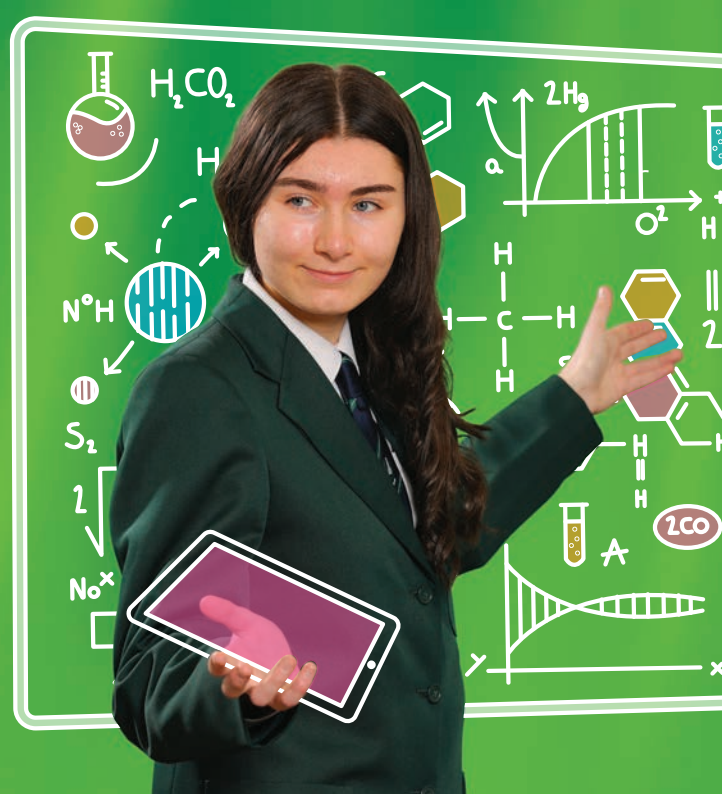


PRIORY **INTEGRATED** **COLLEGE** **SIXTH FORM**







SIXTH FORM AT PRIORY INTEGRATED COLLEGE

Dear Pupils

Priory Sixth Form is outstanding.

Priory Integrated College Sixth Form experience is wonderful. We are small enough to support each of you individually and our results are superb, with pupils going on to highly competitive university courses and next steps. Our Sixth Form pupils are successful and are a close knit community within the wider school body.

This booklet contains information about all of the courses available to pursue in Key Stage 5. Please take time to consider which courses are the right fit for you. Each person has different talents and interests and it is always a winning combination when pupils select courses they can succeed on and enjoy.

Accomplishing more together is our mission here in Priory. We therefore offer a range of successful subjects which offer progression routes to university, apprenticeship and employment.

Courses are delivered by expert staff here in school and in collaboration with our nearest neighbours within North Down Community Learning Partnership and East Belfast.

Most of our pupils in Sixth Form study at least three A Levels (or equivalent) throughout Years 13 and 14. If you enrol on a course at the beginning of Year 13, our expectation is that you will continue to study that course for the duration of your time with us.

We also offer a range of enrichment programmes and activities, which help you to develop confidence, resilience, the ability to work together and a deeper understanding of our integrated ethos.

Pastoral Care is at the core of everything we do and Sixth Form pupils enjoy the support and mentorship of experienced staff. Sixth Form study is both exciting and challenging and we are here to ensure you are on track with your learning, understand how to make progress and importantly are happy and fulfilled.

We will equip you with more than qualifications because being part of Priory Integrated College Sixth Form will support you to develop the independence, maturity and character to be the best version of yourself and to be successful in your chosen career and lives. We do value high expectations academically and pastorally and we believe that success at post 16 is not just about the learning of facts but about a deeper understanding developed through the application of time, self-discipline and working closely with teachers and our staff.

I look forward to meeting you as Sixth Form of Priory Integrated College. You are future leaders of our school and also of society and I cannot wait to see what amazing things you achieve together with us.



Principal

Mrs N Wilson BA (Hons); MEd (CANTAB); NPQSL

SIXTH FORM COURSES

Pupils who wish to continue their education beyond GCSE have a wide range of courses to choose from. Whatever your interests and aspirations there is something here for you. We offer a range of courses at Post 16.

BTEC & OCR Cambridge Technicals

These are Level 3 courses equivalent in value to General A levels. We offer BTEC and Cambridge Technical qualifications in a range of subjects linked to vocational areas, such as: Information Technology, Creative Media Production, Health and Social Care, Science, Sport and Travel & Tourism. Pupils apply their knowledge and skills to tasks that are very relevant to a career in these areas of study. The tasks are a combination of theory and hands-on practical experience, which help pupils to develop a deeper understanding of issues linked to that area. A competent level of literacy and numeracy is required for success in these courses, as well as the ability to work independently and as a team.

General A Levels

These are Level 3 courses in a range of subject areas that would be considered traditional school subjects. General A Levels are very knowledge-based and require a high level of competence in literacy and numeracy. They are assessed through a combination of coursework and formal examination. General A levels studied by Priory pupils in the past include Biology, English Literature, History, Psychology, Religious Education, Geography and Home Economics.

All of the above courses carry UCAS accreditation and are recognised by universities within and beyond Northern Ireland as appropriate foundations for access to degree level courses.

“Here in Priory Sixth Form, the staff are always helpful and supportive. The college offers a mix of subjects to suit everyone. Being a student here has given me the confidence to achieve and I look forward to moving onto university. All of which, wouldn’t have been possible without Priory”

Year 14 Pupil

PASTORAL CARE AT SIXTH FORM

As Leader of Sixth Form, I am very proud of the academic achievement of all our pupils. We take an individual approach to high quality pastoral care and are fortunate to have a number of experienced and dedicated teachers who have a wealth of knowledge and a love for teaching. When we combine these two elements, we are able to ensure the highest levels of care and achievement for all our young people. Every year I am reminded what a privilege it is to be able to support our young people at this crucial stage of their lives. I look forward to welcoming you to Priory, where the journey begins.

A Study Supervisor is on hand to support pupils both academically and pastorally during their study time. The Study Supervisor ensures there is proper and constructive use of the study facilities and fosters an ethos of independent learning. The Study Supervisor will build strong relationships with each pupil and will promote consistently high standards of study and learning. In addition, Classroom Assistants are allocated to provide support and assistance in private study.

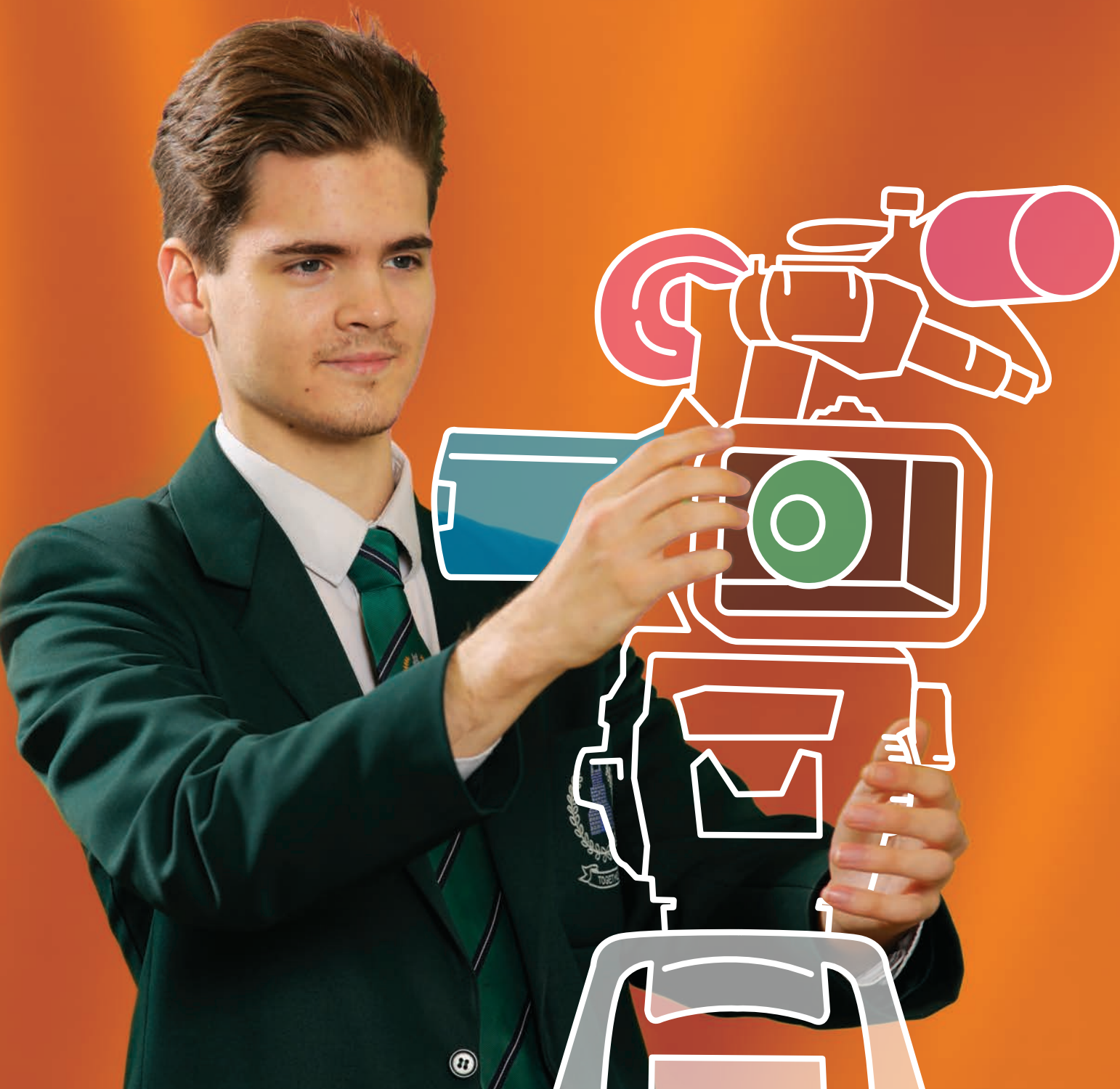
For us to work together to achieve your goals, we require you to attend the College every day and take responsibility for developing your skills and

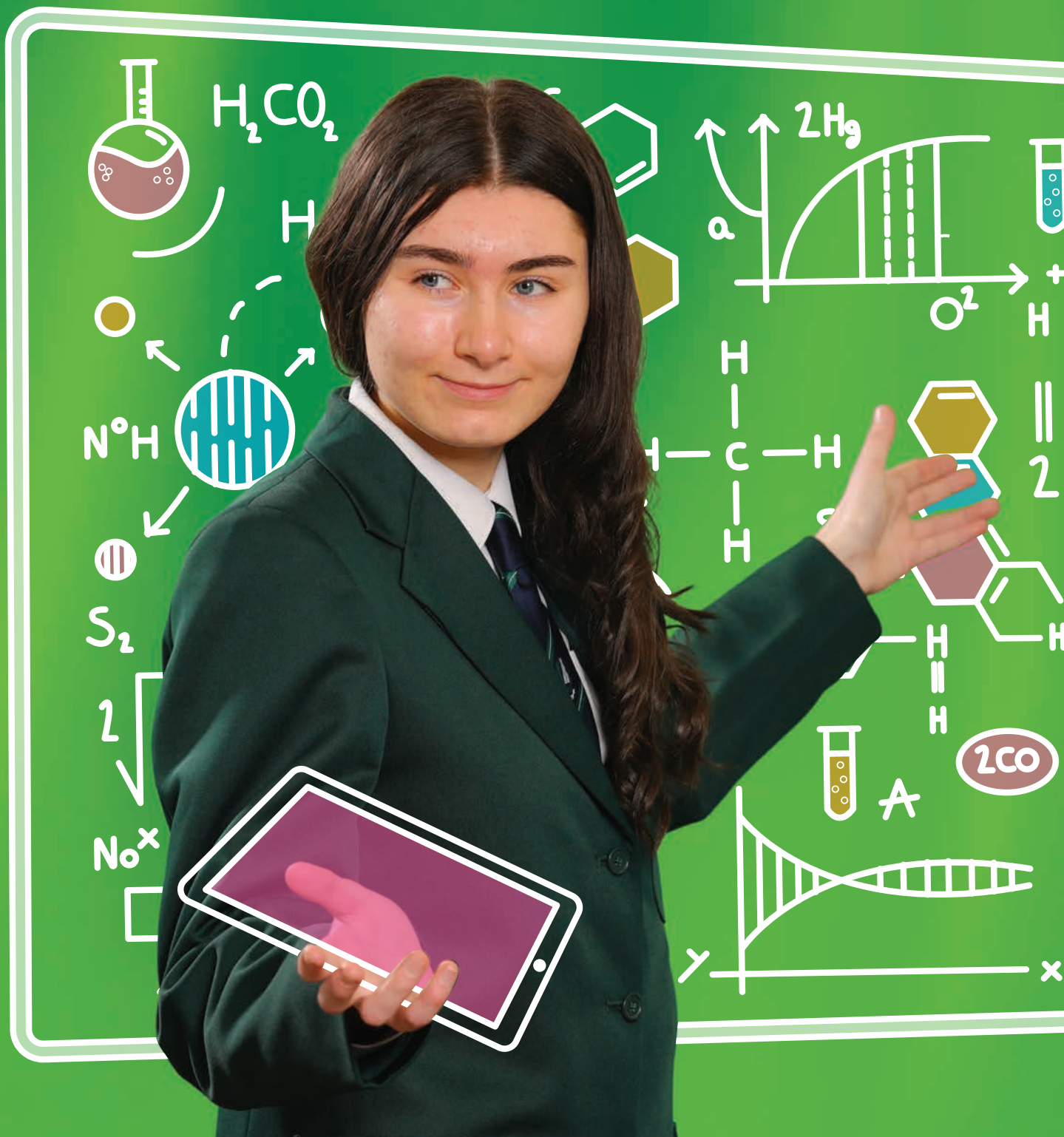
talents with determination. We expect you to represent the College positively at all times and to endeavour to set a strong example of excellence to our younger pupils. To support you, throughout your studies, we will track your progress and support you via intervention and mentoring.

We can offer you small class sizes, tailored support, a chance to develop a sense of service through our charity work, preparation for the next steps and leadership opportunities.



Leader of Sixth Form
Mrs A Keatings-Hunter





ENRICHMENT OPPORTUNITIES

The academic curriculum of Sixth Form is enriched by a number of other opportunities for pupils to develop a range of skills. These opportunities include:

- Induction day for new Year 13 pupils
- Careers guidance
- University visits
- Team building programmes
- Career Ready programme
- Personal and social development
- Guest speakers
- Study skills training
- Student mentoring training
- Year 8 class mentor programme
- Senior Prefects
- Digital Leaders
- Teaching support assistants
- Blocked work experience in local primary schools
- Assisting in the school's BASE unit
- Study for GCSE Mathematics resits
- Work experience placement
- Time management support

Developing Peer Leadership Skills

Many Sixth Form pupils support younger pupils in chosen subject areas where they have an interest and specialism. This is especially valuable experience for those pupils interested in teaching or social care professional career pathways.

Developing Working and Time Management Skills

It is the College's aim to develop in Sixth Form the skills of independent study and time management. There is a range of ICT provision to enable Sixth Form pupils to research and complete coursework portfolios, beyond the classroom. Time management training is provided through the pastoral programme, supported by Sixth Form Tutors and Study Supervisor.

CAREERS EDUCATION

Given the ever changing world of employment trends and the unpredictable nature of the economic climate, it is increasingly important to ensure that all young people are equipped with the skills to plan their learning pathways and associated transitions to further/higher education and the world of work.

"I now specialise in subjects that I want to study. I like the way we have study periods to make effective use of our time in school when we are not in class"

Year 13 Pupil

"I believe that Sixth Form allows you the support you need to achieve the best you can. It has been a great experience for me. My grades have been excellent at AS level."

Year 14 Pupil

"I am happy that Priory was able to accommodate my desire to study Engineering. I always wanted to do this subject. I now study it at SERC in combination with my other subjects at Priory"

Year 13 Pupil

"Sixth Year is a very good experience. You get to build excellent student/ teacher relationships. It helps build your confidence and gives you a range of skills for the working world or further study"

Year 14 Pupil

UNIFORM

SIXTH YEAR BOYS' UNIFORM

Blazer: Green blazer with Priory Integrated College crest (already stitched in)

Trousers: Regulation mid-grey trousers.
No skinny fits allowed.

Shirt: White

Tie: Regulation college tie
(Navy and green stripe with college crest)

V-neck pullover: Mid-grey jumper with double navy trim

Socks: Plain black or dark grey

Shoes: Plain black shoes

Winter wear: Regulation fleece/rainproof coat

School wear or plain black or navy cagoule
(Peter storm)

Scarf: School Regulation scarf

SIXTH YEAR GIRLS' UNIFORM

Blazer: Green blazer with Priory Integrated College crest (already stitched in)

Skirt: Regulation mid-grey

Blouse: White, long sleeves

Tie: Regulation college tie
(Navy and green stripe with college crest)

V-neck pullover or cardigan: Mid-grey jumper with double navy trim

Socks: Mid-grey knee length socks

Shoes: Black; flat-heeled

Winter wear: Regulation fleece/rainproof coat

School wear or plain black or navy cagoule
(Peter Storm)

Scarf: School Regulation scarf

Official Sixth Form Uniform Stockists are: Gowdys and Roberts of Bangor







ADMISSION CRITERIA

3 or 4 A Level Package

Entry requirements: 39 points
(Grade C in English is a requirement)

2 A Level Package

Entry requirements: 28 points
(Grade C in English is a requirement)

Points System

GCSE English and GCSE Maths

Grade A* or 9 = 12

Grade A or 7/8 = 11

Grade B or 6 = 10

Grade C* or 5 = 9

Grade C or 4 = 8

Grade D = 0

Grade E = 0

Grade F = 0

Grade G = 0

(Number grades will apply the same)

All other full GCSE subjects

Grade A* or 9 = 11

Grade A or 7/8 = 10

Grade B or 6 = 9

Grade C* or 5 = 8

Grade C or 4 = 7

Grade D = 0

Grade E = 0

Grade F = 0

Grade G = 0

BTEC Qualifications

Distinction A* = 11

Distinction = 10

Merit = 9

Pass = 7

Other Qualifications

Occupational Studies Level 2 at SERC (Double Award) = 6

Occupational Studies Level 2 Leisure and Tourism = 3

Occupational Studies Level 2 Carpentry and Bench Joinery = 3

Occupational Studies Level 2 Craft = 3

Princes Trust Level 2 Diploma = 7

Princes Trust Level 2 Certificate = 6

These qualifications must be accompanied by GCSE English at grade C or Essential Skills Level 2

OCN Level 2 Science = 5

OCN Level 2 IT = 5

OCN Level 2 Certificate in Personal Success and Well-being = 5

CCEA Level 2 Award Preparation for Adult Life = 5

CODE OF CONDUCT

Each pupil is expected to conform to the Code of Conduct as formulated by the Board of Governors. In addition, a pupil must be prepared to adhere to all timetable and curriculum arrangements. This will include being involved and present at all classes, registration, assemblies and the college ceremonies.

It is important to ensure that pupils embarking on Sixth Form study have the right attitude as well as aptitude. Previous attitude to learning will play a very important part in the selection process. Where a pupil wishes to transfer from another school, GCSE results will be used as evidence of academic ability. The advice and opinion of the Principal and teachers of the previous school will also be taken into consideration.

Attendance

Potential pupils to Sixth Form must have demonstrated a good level of attendance in Key Stage 4.

Positive Attitude

A pupil is expected to have a positive attitude towards behaviour, study and attendance. This will involve the signing of an agreement accepting the rules and standards set by the

College and the obligations and responsibilities expected of them. This agreement includes a commitment to be present in the College for the whole of the College year as a full time pupil and refrain from going on holiday during term time. We will consider attendance, behaviour and commitment in Year 12 before accepting a pupil into Sixth Form.

Commitment

Prospective Sixth Form pupils must have further demonstrated commitment to their studies in Year 12 e.g. Completion of all coursework on time and positive and co-operative attitude to all members of staff.

Pupils who do not conform to the agreed rules and regulations set by the College will be required to seek their educational provision elsewhere.

Criteria for all extra places made available by the Department of Education for admission into Year 13 (Sixth Form).

The Department of Education may, in response to a request from a school, increase the number of pupils that the school can admit to its Year 13.

Places that become available in this way shall be allocated only to pupils who meet the basic eligibility criteria for Sixth Form study (as set out below) and shall be allocated in the order determined by the criteria to be applied in the order set down.

1. Pupils who have most recently completed Year 12 in Priory Integrated College.
2. Pupils from other schools where admission has been agreed and additional places granted by the Department of Education. *

*Parents should note how the Department of Education (DE) will, in response to a school's request, temporarily increase a school's enrolment number in order to allow extra post-16 pupils to enrol. DE will only increase the school's enrolment number if it is content that each external pupil for whom a place is requested would not be able to pursue their post-16 course-choices at another suitable school without undertaking an unreasonable journey (i.e. a journey, that by public transport, would be over an hour from where the young person lives or is further than 15 miles' distance). If DE finds that no other suitable school may provide all of the post-16 courses that the pupil wishes to pursue - then DE will agree a school's request for an extra place.

“Priory has given me the opportunity to grow as an independent and confident person. At Priory I know I can achieve my academic potential and I am always encouraged to push my boundaries to success. The extra-curricular opportunities have allowed me to perform outside of the classroom and discover things that I really love, like singing and charity work. From my first day as a Year 8 student, the college has given me so much support and, as I continue my studies in Sixth Form, I am confident that I will achieve my best.”

Year 14 Pupil



PRIORY INTEGRATED COLLEGE

My Lady's Mile

Holywood BT18 9ER

T: 028 9042 3481

E: info@priorycollege.hollywood.ni.sch.uk

W: www.priorycollege.co.uk